

ISSUE No. 02



FIJI AIRPORTS

Project Waqacavu

Dear Readers

As we come to the end of 2025, we take this time to reflect on the successes that have shaped our year and strengthened “Your Bula Experience”.

The successful completion of phase 1 of most of these projects is aligned to the Airside Master Plan, which lays the foundation of the 25-year strategic vision of Fiji Airports.

This newsletter focuses on the completion of several major projects across our airports, such as :

- Successful installation of Aerobridge Phase 1
- Nadi Off-Gates
- Outer Island Pavement Maintenance Package 1
- Multiple airports fencing upgrades
- Refurbishment of the Procurement Office and staff quarters.

With more than 18 projects in the pipeline in the Airside Master Plan, the Projects Office has approved 25 tender awards, paving the way for continued progress and development in the coming year.

Throughout 2025, our efforts also focused on engaging consultants and preparing tender documentation for upcoming projects across Nadi, Nausori, and the Outer Islands, ensuring the critical groundwork supporting future infrastructure improvements to elevate Your Bula Experience remains on track.

Work is underway to further strengthen our project management structure to effectively manage billion-dollar contracts in the coming years.

The Project Management Office (PMO) now comprises 23 dedicated personnel, forming a diverse and multidisciplinary team. PMO prides itself on 60% of our site engineers being females. The Division embraces the principles of sustainable and resilient infrastructure while delivering state-of-the-art infrastructure.



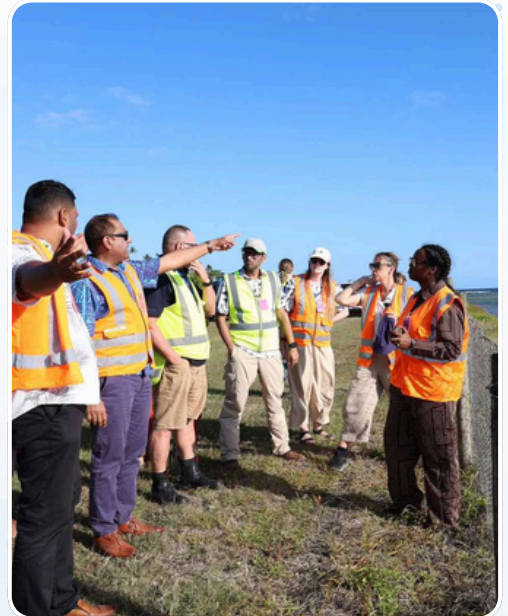
PROJECT HIGHLIGHT

Na Vualiku Project

Funded by the World Bank, the Na Vualiku Project is set to be the cornerstone of huge developments in the Northern Division. These developments will include major upgrade works for the Labasa and Savusavu Airports. These upgrades include runway works, which will boost economic development in the Northern Division.

These projects include:

- A feasibility study of a potential new domestic airport is currently underway.
- A team is currently involved in drawing up a Master Plan for Labasa Airport.
- Air Connectivity Study and Master Plan for Matei Airport in Taveuni.
- Both Labasa and Savusavu Airports are expected to undergo major upgrades and new works in their facilities.



These initiatives form part of a broader strategy to enhance aviation infrastructure and improve operational efficiency in the Northern Division and across the region.

Labasa Runway Strengthening Works

Strengthening runway works are expected to commence at the Labasa Airport on 16 February 2026 and will run for six weeks, ensuring that Fiji Airports continue to serve the people of Vanua Levu safely and reliably for years to come.

The runway pavement strengthening works, funded by the World Bank under the Na Vualiku Project, will enhance the airport's safety and reliability and reinforce sections of the existing runway pavement.

The much-needed runway strengthening will also increase the Pavement Classification Rating (PCR), a key indicator of the runway's capacity to safely support aircraft weight.

Although the temporary closure may cause some short-term inconvenience, these improvements are vital to ensure the long-term safety, reliability, and sustainability of aircraft operations at Labasa

Stakeholder Engagement

As part of our commitment to inclusive and transparent stakeholder engagement, representatives from Fiji Airports, the Department of Lands, and the iTaukei Land Trust Board recently met with the landowning unit, mataqali Nabukarabe of Nakama Village, Vanua Levu. The mataqali are the traditional landowners of the land on which Waiqele Airport is located.

The meeting provided an opportunity to discuss ongoing plans for the Waiqele Airport upgrade, share information, and hear the landowners' views and concerns. This engagement reflects our continued dedication to working collaboratively with key stakeholders as the project progresses.

Additional engagements undertaken this quarter include the Landside Master Planning session held at Nausori Airport with landowners, the iTaukei Land Trust Board (TLTB), and Fiji Airports.



Nadi International Airport Happenings!

Departures Lounge Early Works

Enhancements to Bond Storage and Screening Facilities

Fiji Airports Tenants at Nadi International Airport will have access to additional storage space after the reopening of our newly upgraded Bond Storage Area located at the Departure Lounge.

The upgraded Bond Storage Area has created additional space enabling tenants to organise storage racks more efficiently. The Bond Storage Area also features an additional layer of security with a roller shutter door, which now separates the scanning area from the storage zone during non-operational hours.

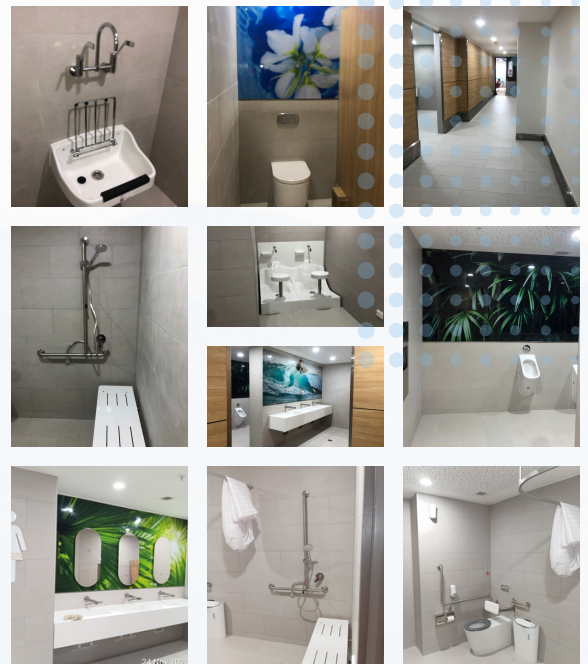
To reduce apron congestion and improve traffic flow, a newly designed ramp and docking area are now in place. This will streamline truck offloading before screening.

Revamped Facilities

The Projects list this year also included a newly renovated prayer room, allowing our travellers to use the prayer rooms whenever needed. This room is located at the ground floor of the departures lounge and is now in operation.

Part of the upgrade includes a newly revamped smoking room that is now operational. The well-air-conditioned room was set up following the relocation of the bond storage area.

Our passengers can be assured they will experience the tropics at Nadi International Airport, as the washroom area on the ground floor of departures has been revamped with a tropical touch to integrate with the wider departure lounge project by 2028.



Aerobridge Installation

The Fiji Airports management and projects team is proud to announce the successful installation and operation of the first of four new aerobridges as part of Fiji Airports ongoing infrastructure modernisation program.

Phase 1 of this project, comprising four aerobridges, has been delivered on time and within budget.

After nearly 40 years since the original aerobridge was installed at Nadi International Airport in 1985, it is now being replaced with modern aerobridges featuring advanced features. The introduction of aerobridges in the 1980s aligned with the arrival of larger aircraft such as the Boeing 747 in the Fiji market. Its recent removal marks the beginning of an exciting new era for Fiji Airports as we continue to modernise and elevate Your Bula Experience.

Today, this upgrade reflects our broader vision to future-proof airport operations and support sustainable growth in air travel demand.

The new aerobridges feature advanced technology, including:

- Automated aircraft docking for improved efficiency
- Automated billing systems for bridge usage
- Remote monitoring of aerobridges, including early fault detection



Baggage Handling System (BHS)

Another project that will improve the passenger experience is the commencement of the first stage of works at the Baggage Holding Facility.

The first stage of this project includes replacing the primary Hold Baggage Screening (HBS) X-ray machine and upgrading the Baggage Handling System (BHS) conveyors that support the primary screening line.

This vital work marks the first stage of a wider effort to enhance security, efficiency, and reliability across our baggage operations. Stage 1 of the works also increases our bag-loading capacity into aircraft bag cans by 2x. The current phase is expected to be completed in mid-2026.

Work has commenced on the BHS Facility, which will house an additional baggage makeup area adjacent to the current operations building. As a result of these works, gates 12 & 13 have been closed.



Outer Stations Projects Update Nausori International Airport

Passengers arriving at Nausori Airport will soon experience a new look and feel, as works are underway to construct a new pavilion designed to enhance passenger comfort and convenience.

This modern facility will serve as a dedicated waiting area and will feature a café, retail spaces, and upgraded washroom facilities, bringing the Your Bula Experience to life.

The pavilion will be constructed on a newly allocated space within the airport premises, creating a welcoming environment for travellers. The tender award for this project is scheduled for the first quarter of 2026, marking the beginning of an exciting development that aligns with our commitment to improving airport infrastructure and passenger experience.

The pavilion is part of Stage 1 of the Nausori Airport upgrade under the Nausori Master Plan.



Outer Islands Upgrade Works

Fiji Airports has identified the need to upgrade fencing at its Outer Islands Airports to enhance security, ensure compliance with safety standards, and improve operational efficiency. This initiative is crucial to ensuring continued and reliable airline services in the Outer Island region while meeting regulatory standards and improving overall airport functionality.

The Scope of work for the following airports, Cicia, Moala, Kadavu, Rotuma and Vanua Balavu, includes the construction of a fence with new gates, drainage clearance and the construction of a new tractor shed.

Rotuma Airport's scope of works includes the construction of a new fence with gates, drainage clearance, and terminal maintenance.



Completed Projects in 2025

- Nausori Administration Office
- Procurement Office
- Labasa Temporary Terminal
- Building Services Audit for Nadi Critical Facilities
- Quarters Refurbishment
- Guard House at Nausori and Nadi Fire Gates
- Drainage Improvement Works near the Temple and Methodist Church at the FA Compound
- Roller Shutter Door Installations at the Fire Station
- Fencing Works at New Town & FA Compound (adjacent to Namaka Industrial)

Exciting Projects on the Horizon

- A new Moala Terminal on Tender Stage
- New office spaces on the FA Compound
- Nausori Terminal Refurbishment Works
- Launch of the New Landside Master Plan

Renovation Closure Notice

- Labasa Airport Temporary Closure for Labasa runway Strengthening Works from 16 February to 27 March 2026
- Nadi Runway Pavement Maintenance (Night Works): Tentatively Set for 26 January to 22 May 2026
- Arrivals Area, Washroom and lift disruptions for the new Arrivals lift installation from December 2025 to April 2026.
- Sliding Doors change at each gate and transit with 2 days downtime at each gate from 20 January 2026 to March 2027. Each gate will be completed in a different week.
- Departure Check-in Counters BHS stage 1 upgrade of checking scale conveyors from March 2026 to November 2026. (4 counter closures at a time for the required upgrade)

